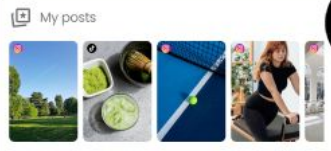


# dzply

AI Partner Program v1.0  
Version 1.0 (April 2026)



 A brand wants to collaborate with you! May 18



Personalized Strategy

Audience

Total Revenue \$64,58k +14.6%

+74,6%

2,018 Likes

Build Your Brand #dzply #discovery



## Founding AI & Tech Partner Program

TURNING AI TOOLS INTO REVENUE ENGINES IN THE CREATOR ECONOMY

AI Distribution & Monetization Layer

# The Problem

## AI Creates Content, It Doesn't Create Revenue

**AI & Tech companies are winning on tech ...  
but losing on:**

- ✗ Distribution beyond SaaS
- ✗ Low monetization per user
- ✗ Weak Creator adoption
- ✗ No embedded revenue loops

**Most AI tools are used ... but not monetized**



# Market Shift

## The Creator Economy Is Evolving

### From:

- Manual content creation
- One-off brand deals
- Tool-based workflows

### To:

- AI-generated content
- Automated engagement
- Monetized creator systems

**AI is not the product anymore — it's the engine**



# The Opportunity

## There is a missing layer

👉 A system where AI tools:

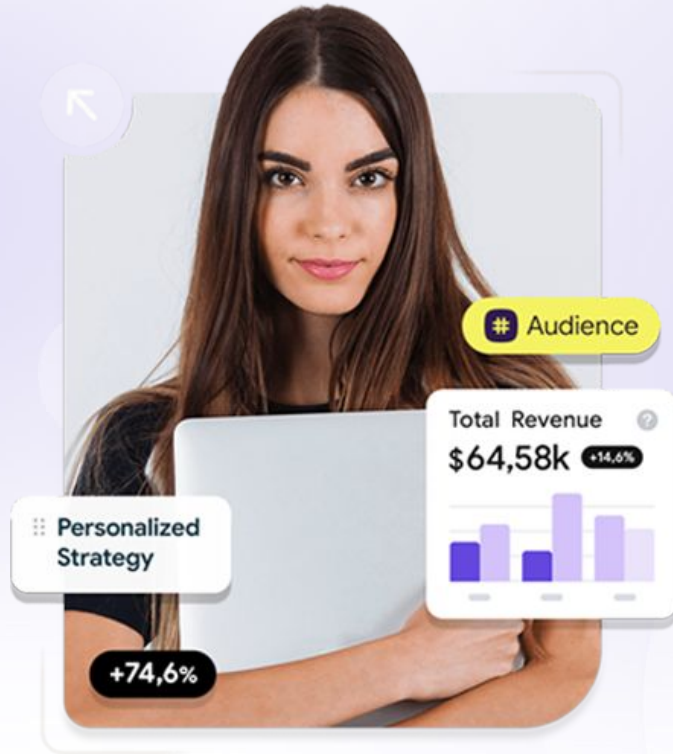
- Generate content
- Engage audiences
- Convert users
- Create revenue

**This layer does not exist yet — dzply. is building it**



# dzply. The Solution

## = AI Monetization & Distribution Layer



### We enable:

- AI-powered Creator workflows
- Automated engagement (chat, voice, video)
- Revenue generation (subscriptions, content, calls, commerce)

👉 AI tools become:

**Embedded revenue engines inside Creator Ecosystems**

# How It Works?

## Inside dzply.

- Creators use AI tools (video, voice, chat, image)
- AI generates & automates content + interaction
- Fans engage via monetized channels
- Revenue is generated continuously

👉 **Every interaction = monetization opportunity**





## Why This Matters

### We Solve Your Biggest Growth Problems

#### Increase Usage

- More Creators using your API
- Higher frequency of interactions

#### Unlock Monetization

- Revenue tied to usage
- New business models (beyond subscriptions)

#### Expand Distribution

- Direct access to Creators + Agencies
- Embedded into real-world workflows



# Founding AI & Tech Partner Program (1/2)

Target: €250K Pool (Limited Slots)

## Flexible Participation:

- Raise total €250K
- Revenue Share pool: 2.5%
- Max available slots for partners: 5

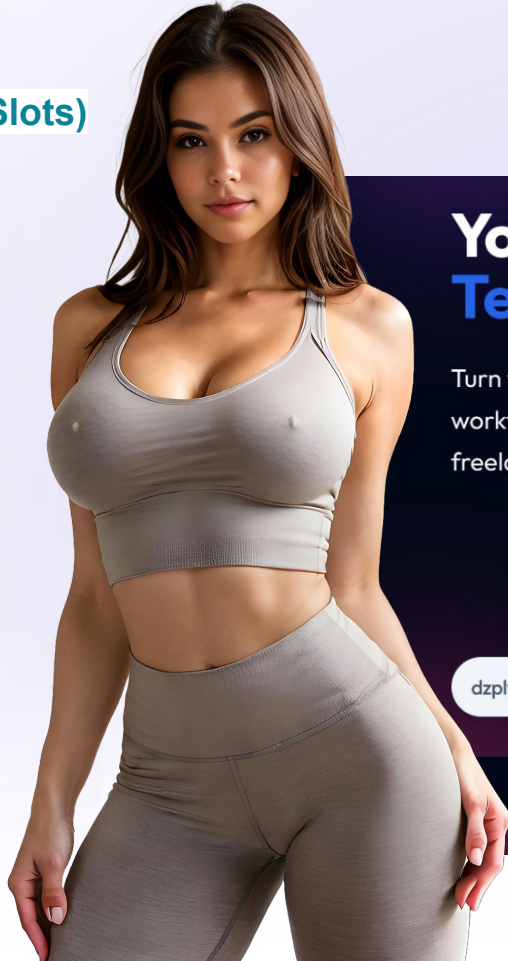
## Each Partner Gets:

### Distribution

- Featured placement in dzply.
- Direct creator access

### Integration

- Early API integration
- Workflow embedding



## Your Profile, **Your AI**, **Your AI Team**, Always Online...

Turn your link-in-bio into an **automated revenue engine**. Powered by your AI workforce that engages, converts, and sells for you 24/7. For creators freelancers, brands and agencies focused on monetization


**3**  
CREATORS

**5**  
BRANDS

**0**  
FANS

dzply.com/ yourname

Claim Your Username →

AI Agents 

Click To Explore ... 



# Founding AI & Tech Partner Program (2/2)

Target: €250K Pool (Limited Slots)

## Each Partner Gets:

### 💰 Monetization

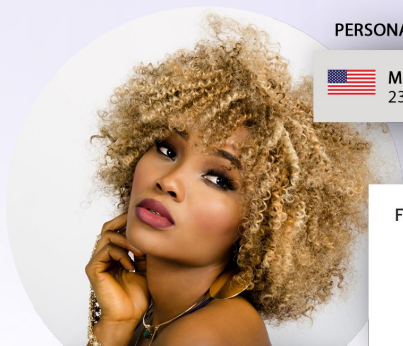
- Revenue share on usage
- Access to monetized interactions

### 🚀 Growth

- Co-marketing
- Case studies
- Launch campaigns

### 📊 Strategic Access

- Product feedback loop
- Influence on roadmap

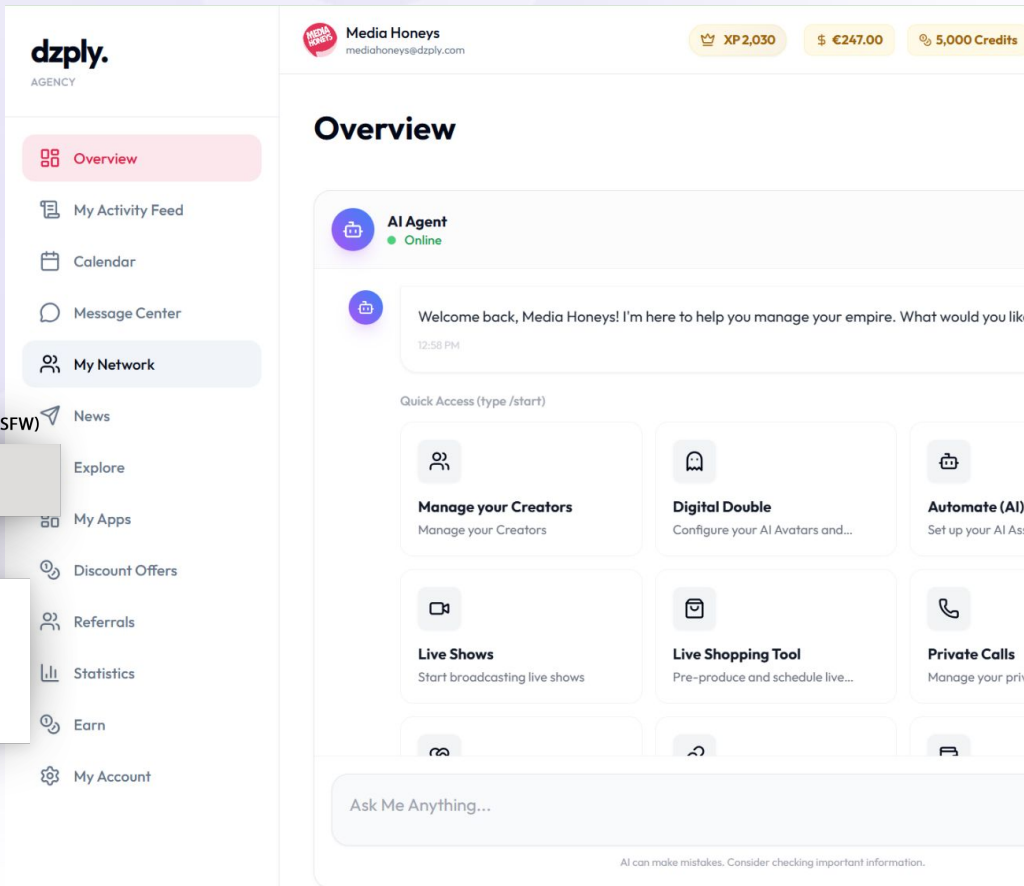
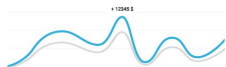


PERSONAL TRAINER (SFW)

MARY JANE  
23 years

FOLLOWERS  
273K  
FANS  
89.5K

REVENUES (LAST 7 DAYS)





## Participation Options

### Option A - Founding Revenue Based Partner

- €25K – €50K
- Revenue based stake
- Full access to all benefits

### Option B - Founding Integration Partner

- €2.5K – €10K
- No revenue based stake
- Same commercial + integration benefits

# Why Join Early?

## Early Partners Will:

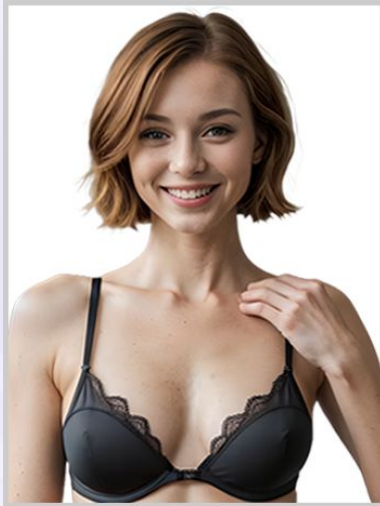
- Shape the ecosystem
- Secure premium positioning
- Capture early revenue flows
- Build category leadership

## We are not building a tool

**We are building the infrastructure layer for  
AI-powered Creators, Freelancers, Agencies and  
Brands**



# Roadmap Snapshot



@FITWITHJANE

**dzply.**

AI-Powered Monetization  
for Creators, Gig Workers,  
Agencies and Brands

## What To Expect in 2026

- ✓ Platform 90–95% ready
- SOON Launch founding partner programs (Brands and Agencies)
- SOON Initial partner integrations
- SOON Free annual Creator Pro accounts (2,500)
- SOON Creator onboarding
- SOON Monetization rollout
- SOON Scale distribution
- SOON Development: Mobile native app (launch: Q4/2026)
- SOON Development: Live Shopping Engine (launch: Q4/2026)

# Call To Action

## We Are Selecting A Small Group Of Founding AI Partners

### If Relevant:

- Let's explore integration
- Define monetization flows
- Align on partnership structure

**dzply.**

AI-Powered OS for  
Creators, Gig Workers,  
Agencies and Brands

[dzply.com](https://dzply.com)



Sandro Anthonio

[sandro@dzply.com](mailto:sandro@dzply.com)

+420 7766 40481



**Your Profile, Your AI, Always Online ...**

[staging.dzply.com](https://staging.dzply.com) (v1.0a closed beta)